



T Series Oil Free Compressors And Vacuum Pumps

This range of three oil free rotary sliding vane machines incorporates IP54 motors, with Models T4.8 running at 2800 r.p.m. and T4.10 and T4.16 at 1420 r.p.m. All motors are suitable for 50/60Hz supply with wide voltage ranges.

Suitable for pressures up to 1 bar.g or 850 mbar vacuum, they are designed for continuous operation, giving long vane life and noise levels not exceeding 62dB'a'.

Compressors are fitted with an intake filter and a pressure relief valve.

Vacuum pumps are complete with an inlet pipeline filter and a vacuum relief valve.

T Series

Vacuum Pump:

Vacuum Forming
Vacuum Lifting/Chucking
Vacuum Priming
Egg Grading

Air/Gas Compressors:

Aeration

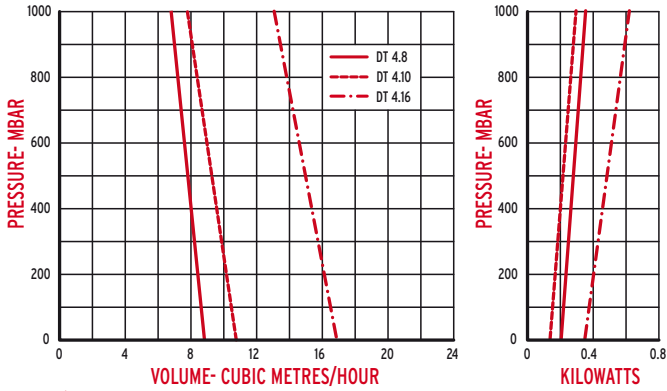
- Pressure up to 1 bar.g
- Vacuum up to 850 mbar.g

Displacements: DT/VT4.8 7.6 m³/hr
DT/VT 4.10 10 m³/hr
DT/VT 4.16 16 m³/hr

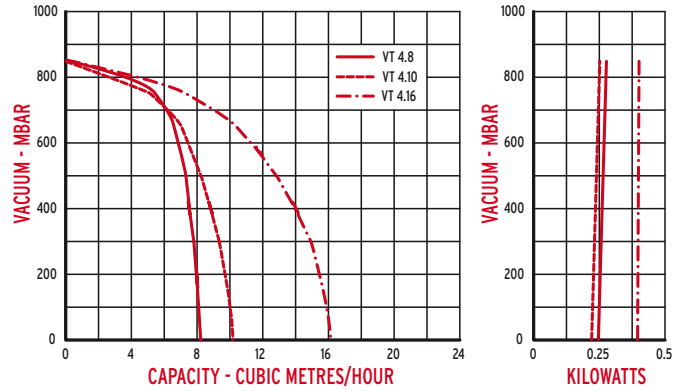


Dimensions & Performances

Compressor



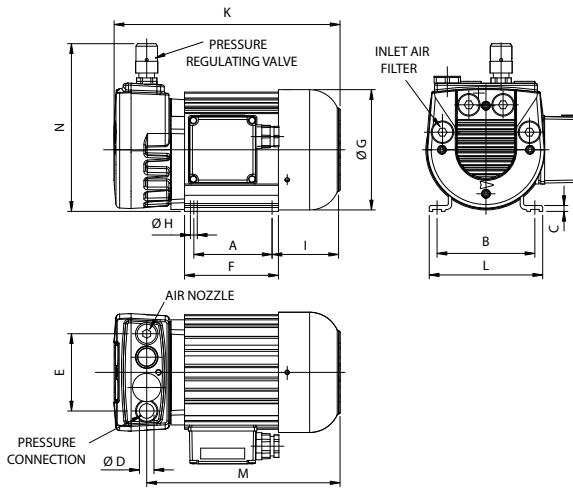
Vacuum Pump



Note:

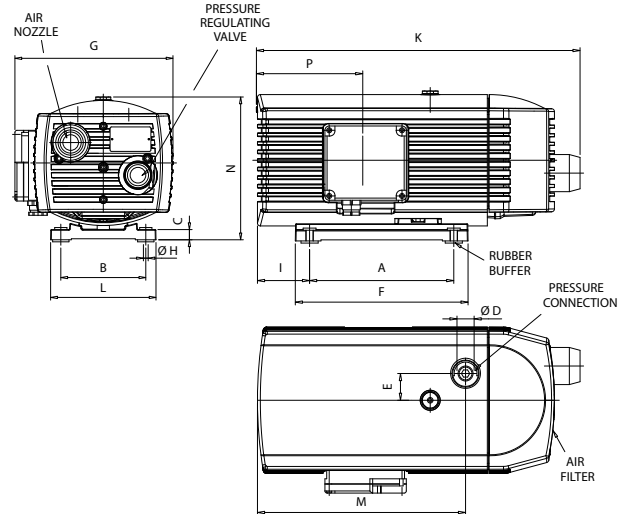
All units are factory tested. Volumes and capacities listed based on manufacturer's average performance measured at sea level and 16°C. Actual volumes and capacities will vary with changes in elevation and ambient temperatures

DT4.8

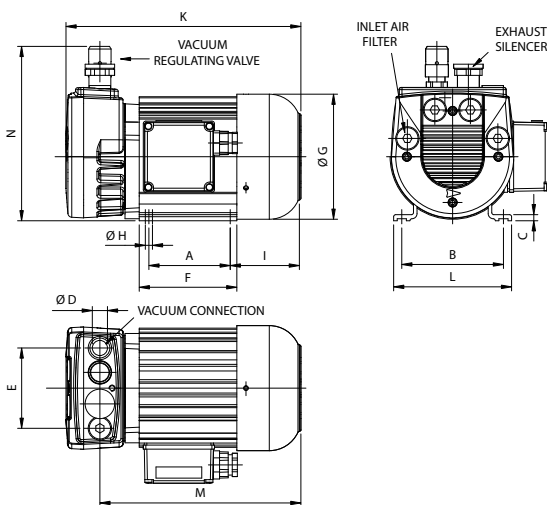


DT4.10 - DT4.16

	MODEL		
	DT4.8	DT4.10	DT4.16
A	801	60	202
B	100	112	125
C	6	15	15
D	G 3/8	G 1/2	G 1/2
E	79	35	35
F	96	200	242
G	123	206	231
H	7	7	7
I	69.5	106	73
K	231	429	452
L	116	142	155
M	198	257	291.5
N	171.5	195	211
Kgs	11.5	16	22.4

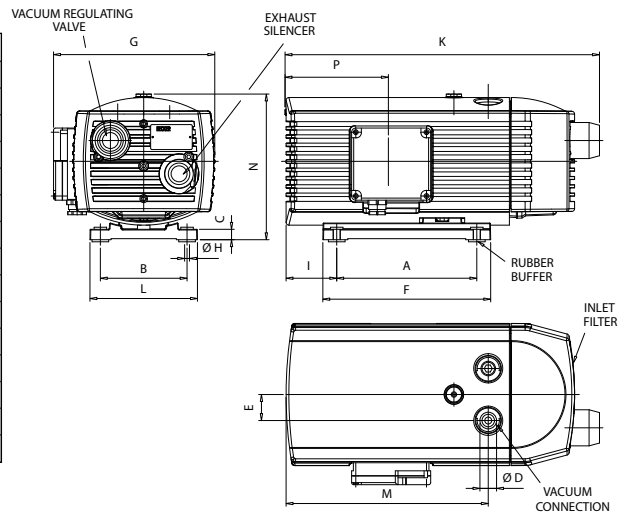


VT4.8



VT4.10 - VT4.16

	MODEL		
	VT4.8	VT4.10	VT4.16
A	80	160	202
B	100	112	125
C	6	15	15
D	G 3/8	G 1/2	G 1/2
E	79	35	35
F	96	200	242
G	123	206	231
H	7	7	7
I	69.5	106	73
K	231	429	452
L	116	142	155
M	198	257	291.5
N	171.5	195	211
Kgs	11.5	16	23.5



Whilst the details contained in this leaflet are representative of the machines, the actual products may differ from the illustrations due to improvements in design. Certified copies and performance curves will be supplied on request.