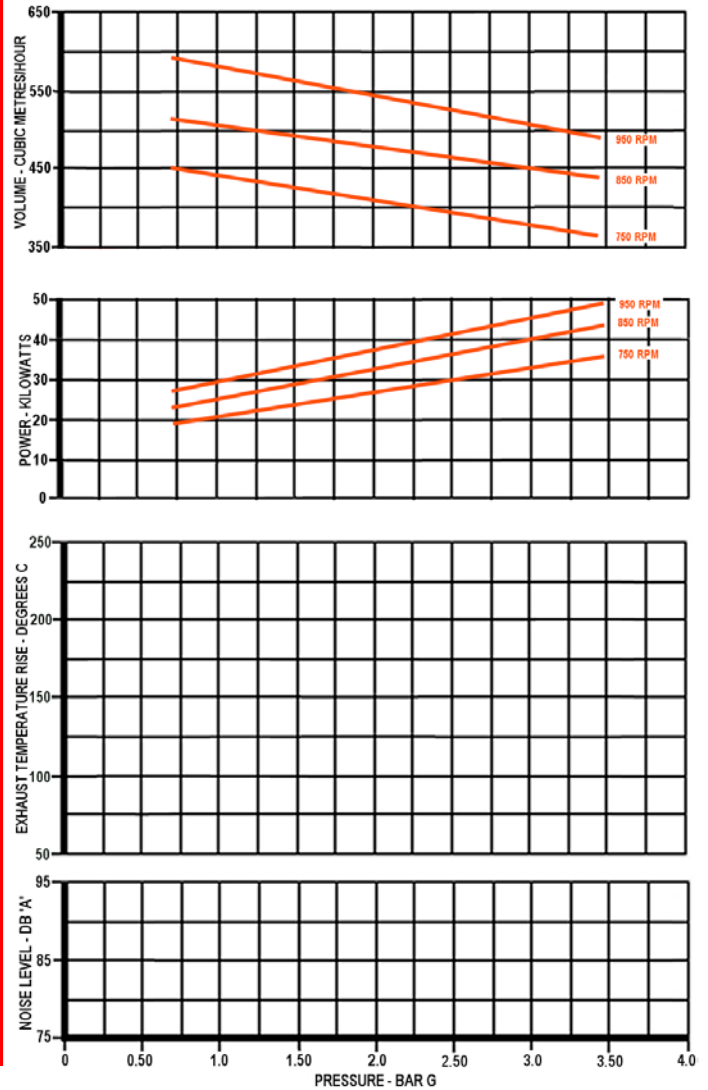




## Air Performance Figures



## Materials of Construction

Component	Material Specification
Cylinder	S.G. Iron EN-GJS-400-15 / EN-JS-1030 (EN1563)
Coverplates	S.G. Iron EN-GJS-400-15 / EN-JS-1030 (EN1563)
Rotor / Shaft	S.G. Iron EN-GJS-400-15 / EN-JS-1030 (EN1563)
End Caps	Grey Cast Iron EN-GJL-200 / EN-JL-1030 (EN1561)
Spacing Ring	Grey Cast Iron EN-GJL-200 / EN-JL-1030 (EN1561)
Blades	Non-Asbestos Resin Bonded Fabric
Ball Bearing	Single row deep groove with metal cage. Clearance - Normal
Roller Bearing	Single row, cylindrical roller with metal cage. Clearance - Normal
Lip Seals	Steel cased, Viton
Mechanical Seals	Stainless Steel rings & spring, carbon face, S.G. Iron seat, Viton bellows & O-Ring

## SPEED

Maximum Speed	-	1000	RPM
Minimum Speed	-	700	RPM

## TEMPERATURE

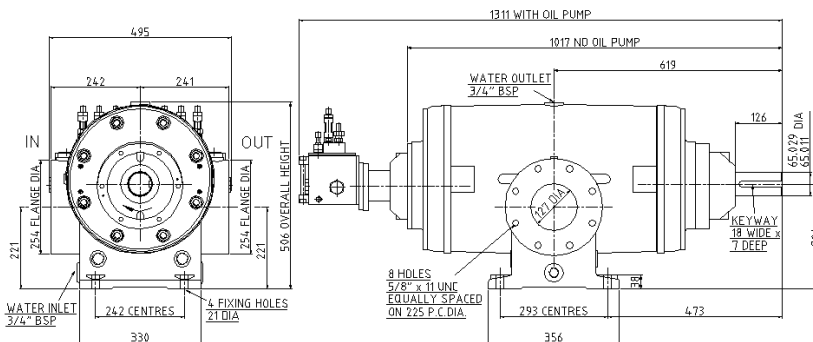
Max. Inlet Temp.	-	40	°C
------------------	---	----	----

## INERTIA

Moment Of Inertia	-	1.148	Kgm <sup>2</sup>
-------------------	---	-------	------------------

## WEIGHT

Approx. (No oil pump)	-	491	kgs
Approx. (With oil pump)	-	510	kgs



## LUBRICATION

Bearings and blades lubricated using SHELL CORENA P150 oil

## BEARING ARRANGEMENT

Ball bearing with roller bearing at drive end and roller bearing at rear end giving approximate life values of drive end 28000 hours and rear end 42000 hours.